

Welcome!!!

Masters of Arts in Education,
ECE Option &
ECE Specialist Credential
Orientation Agenda:

1. Introductions
2. Program Overview
3. Student Panel
4. Faculty Panel
5. Course Mapping



Introductions - *Getting To Know You*

Please tell us your Name and for each color candy that you randomly selected (*report out on no more than three*), please share:

Red - Favorite Hobbies

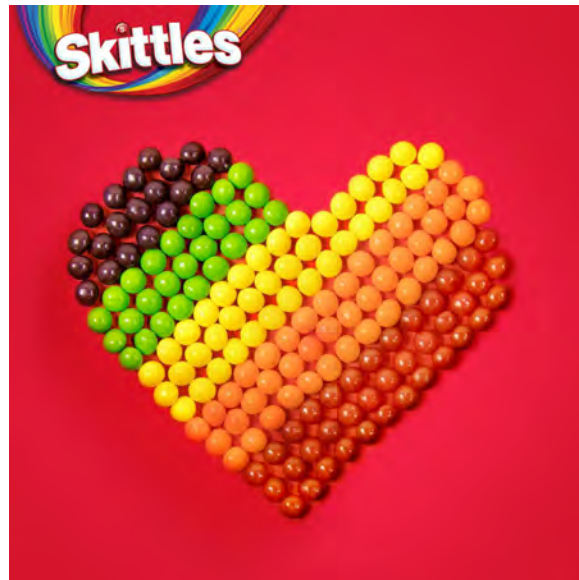
Orange - Favorite Place on Earth

Yellow - Favorite Movie or Song/Music

Green - Favorite Memory

Purple - Favorite Food

Blue - Wildcard (tell us anything about yourself!)



M.A.Ed., ECE Program Overview

Preparing Students to Achieve their Goals

FRESNO STATE


Kremen School of Education
and Human Development

**Career Pathways with an
Early Childhood Education
Graduate Degree**

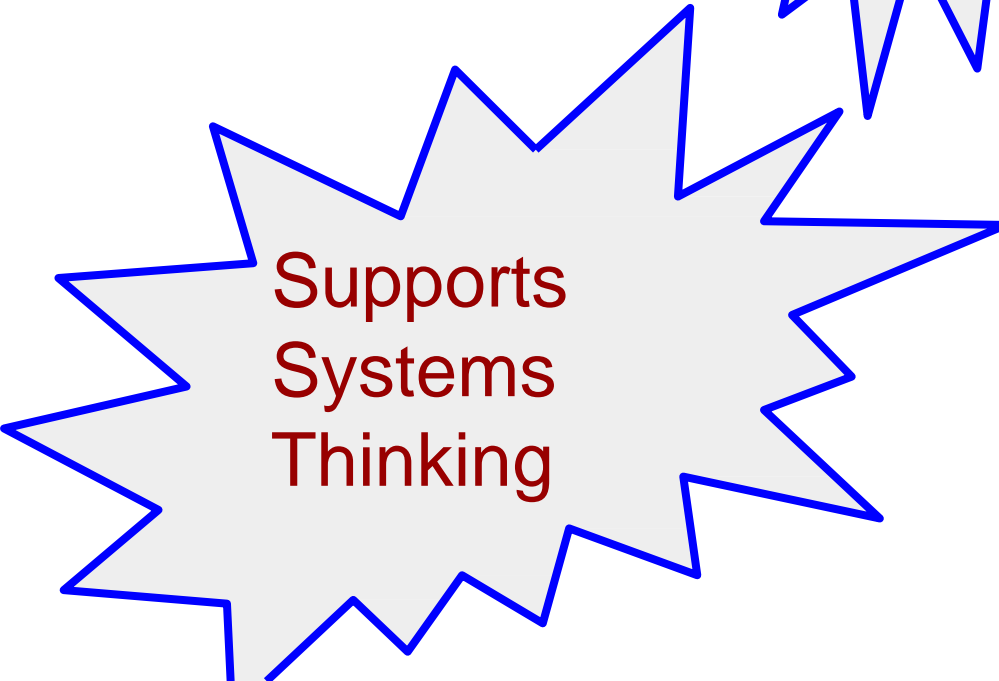
Program Coordinator

Heather L. Horsley, PhD

hhorsley@mail.fresnostate.edu



Engages.
Collaborates.
Advocates.



Supports
Systems
Thinking



Seeks
input

Program At-A-Glance

M.A.Ed., ECE Option: *30 units*

Courses:

M.A.Ed. Core: ERE 220* & CI 285

ECE Option: LEE 171, LEE 232, LEE 233, LEE 235, LEE 241, LEE 250, & LEE 271

Advancement to Candidacy Form: Complete during the first 2 weeks of your NEXT-to-LAST semester in order to graduate.

Culminating Experience: Choose between option A or B:

- A. Comprehensive Exam [0 units] and an approved electives [3 units]
- B. LEE 298B Project or Thesis [3 units]

ECE Specialist Credential: *27 units*

Courses:

M.A.Ed. Core: ERE 220* & CI 285

ECE Option: LEE 171, LEE 232, LEE 233, LEE 235, LEE 241, LEE 250, & LEE 271

Culminating Experience:

- A. Specialist Research Paper and Public Presentation completed during LEE 235

**Requires prerequisite (ERE153) [0 units]*

Program Highlights



- Outstanding Faculty!
- NAEYC Accredited!
- Demonstration Centers!
- Phenomenal Students!

Opportunities & Recognitions:

- Research Assistant Opportunities
- Outstanding Thesis Projects
- Graduate Student Ambassador
- Dean's Merit Awardees



An Early Childhood Education MA Journey



Christina Macias, MA
Early Childhood Education
Kremen School of Education, Early Childhood Education
California State University, Fresno

My Journey

- BS Biology/Ecology from Fresno State
- Biologist for the Department of Transportation for 10 years
- Nationally Accredited Infant and Toddler Program, 10 years
- Passionate interest in science in the early years using gardens and outdoor classrooms
- Married with two children. We love to read, travel, and spend our time outdoors!



Bliss Street Childcare & Early Education

Early Education Experiences

- 2008 - 2018
- NAFCC Accreditation
- Continued education and professional development
- Play-based learning + science experiences
- Concerns about equity and access
- Addressing early education as a means to impact poverty
- Creating relationships with leaders in the field of early childhood education



Coursework & Inspiration

1. Specialty Area Project
 - a. What was I already working on in my field?
 - i. Gardens and outdoor education
 - b. What interested me most in early childhood education?
 - i. Development
 - ii. Science
 - c. How could I expand on those interests?
2. Self-reflection
 - a. Reflected on the work that I was most interested in and connected that interest to my specialty area project.



MA Project Plan

- I Advisor Approval
- II IRB
- III Present project to school districts

Surveys (All TK teachers in Sanger)

Interviews and focus groups (4)

- Early experiences
- Access to funding and resources
- Time
- Professional Development
- Factors that influence success with science application
- Constraints



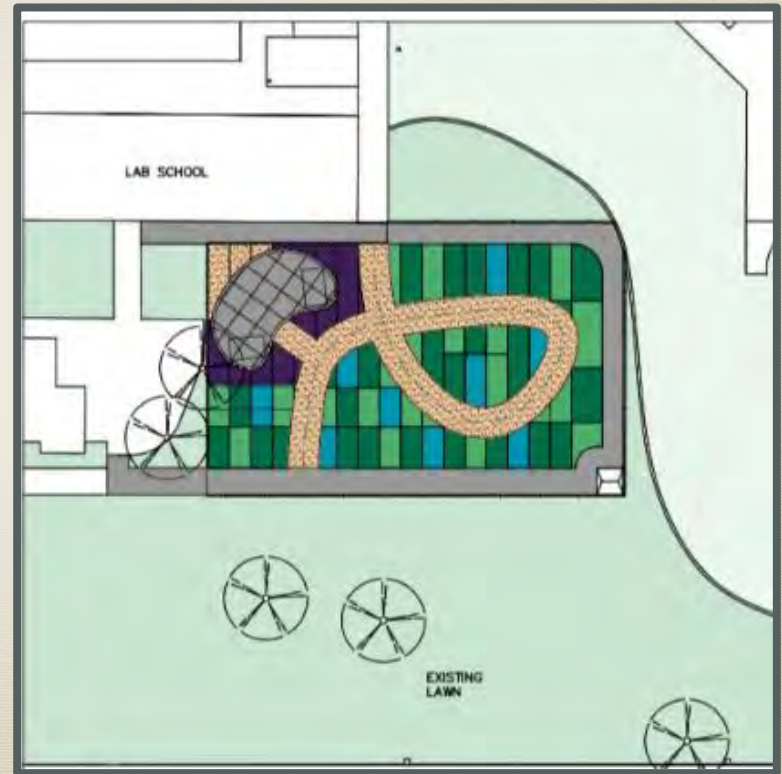


What happened along the way?

1. Visit to seven demonstration gardens and school garden conferences
2. Bigger Ideas!
3. New project proposal to Kremen School of Education
4. Kremen School Demonstration Gardens & Outdoor Classroom Project
5. Phase 2: Revised MA project
6. Community Partnerships
7. Teaching Opportunities
8. New Goals!



What's Next?



How to turn your coursework into your master's Project or Thesis

Coursework Connections

1. Align coursework and projects with your area of interest
2. Keep all literature reviews organized
3. Choose an **advisor**
 - a. Support
 - b. Ideas
 - c. Advocate

Network Connections

1. **Mentors**
2. Leadership
3. Conferences
 - a. Ventura County Farm-to-Schools
 - b. Outdoor Classroom Project
 - c. Life Labs!
4. **Grants & Scholarships!**

Advice



1. Stay organized
2. Maintain communication with advisors
3. Build relationships
4. Network
5. Focus on what you love
6. Take care of yourself and support your classmates
7. Dream big!



"You don't find your purpose - you build it." John Coleman



Questions?

Christy Macias

clc34@mail.fresnostate.edu

(559) 349-9159

Stay Connected -Follow us on social media

Facebook

- Username: Early Childhood Education at Fresno State
- Handle: @FresnoStateECE
- URL: www.facebook.com/FresnoStateECE

Instagram

- Username: Early Childhood Education at Fresno State
- Handle: FresnoStateECE
- URL: www.instagram.com/fresnostateece/

Twitter

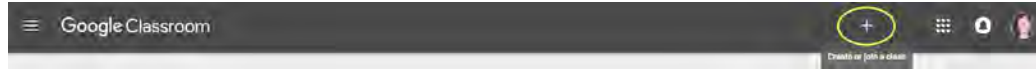
- Username: Early Childhood Education at Fresno State
- Handle: @FresnoStateECE
- URL: <https://twitter.com/FresnoStateECE>

Be Informed

ECE Program Google Classroom: classroom.google.com



On the homepage, click  Add join class



Enter Classroom Code: **ns53iv** and Click Join

Early Childhood Education



and Development Club

ECED Club Goals

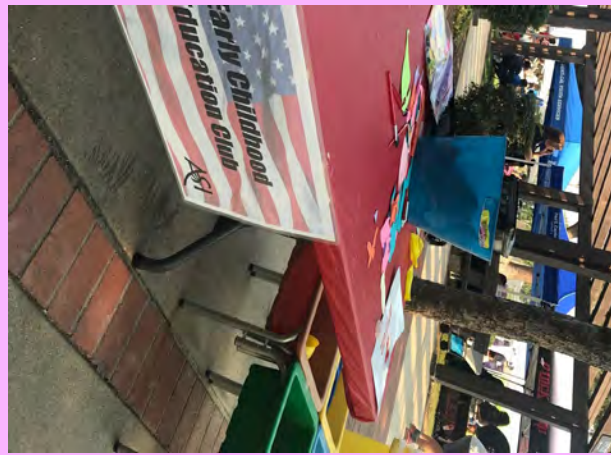
- Connect!
- Collaborate!
- Advocate!

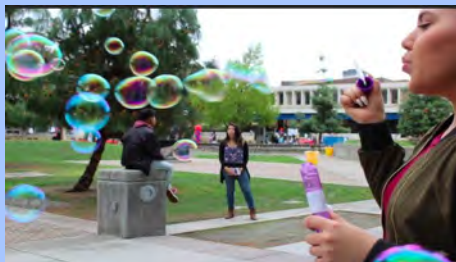
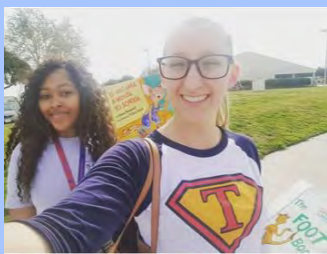
Membership Requirements

- Fresno State Student
- Minimum 2.0 GPA
- Pay semester dues
- Attend our monthly meetings
- Be involved in our events!

National Night Out Event

August 7th, 2018







Follow Us on Social Media



FB: Early Childhood Education and
Development Club at Fresno State

IG: eced_club_fresnostate

Twitter: ECED_FS

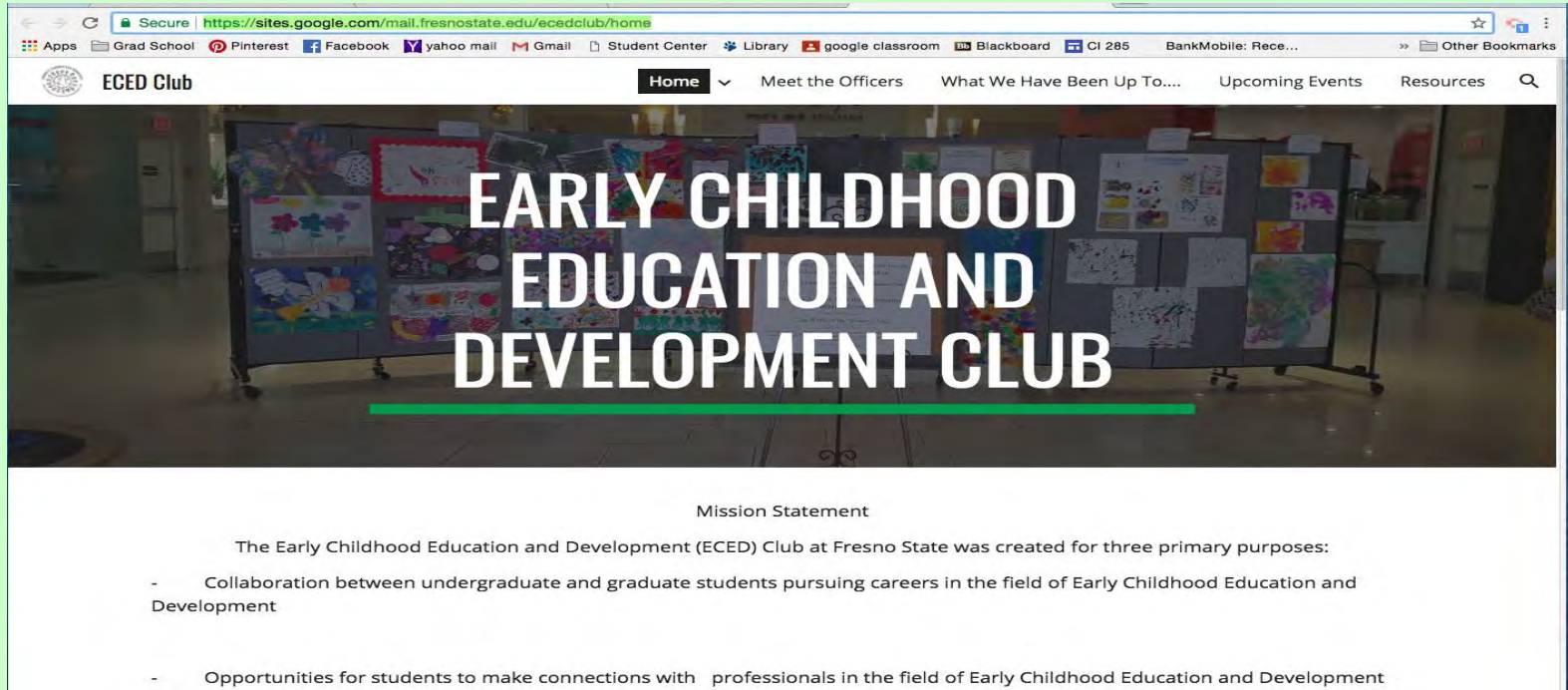


Snapchat: eced_club



ECED Club Website

<https://sites.google.com/mail.fresnostate.edu/ecedclub/home>



Secure <https://sites.google.com/mail.fresnostate.edu/ecedclub/home>

Apps Grad School Pinterest Facebook Yahoo mail Gmail Student Center Library google classroom Blackboard CI 285 BankMobile: Rece... Other Bookmarks

ECED Club Home Meet the Officers What We Have Been Up To... Upcoming Events Resources

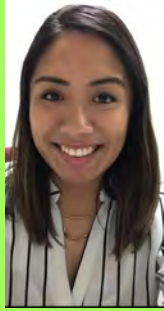
EARLY CHILDHOOD EDUCATION AND DEVELOPMENT CLUB

Mission Statement

The Early Childhood Education and Development (ECED) Club at Fresno State was created for three primary purposes:

- Collaboration between undergraduate and graduate students pursuing careers in the field of Early Childhood Education and Development
- Opportunities for students to make connections with professionals in the field of Early Childhood Education and Development

Contact us for more information!



Andrea Cervantes
President

andreacervantes@mail.fresno.edu

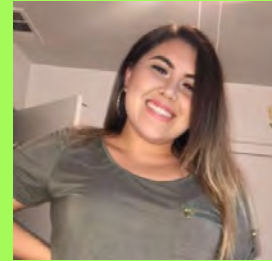


Simone Moultrie
Secretary



Victoria Bodine
Vice President

vbodine@mail.fresnostate.edu



Melissa Blanco
Treasurer

Faculty Voices



Course Mapping

- Reviseable
- ***Pay careful attention to which semesters courses are offered***
- Review with faculty member (sign off)
- Review with Program Coordinator (Scan doc)
- Keep hard copy for your records and to guide your registration process.

Fall 2018 Available Courses:

LEE 171 Trends and Issues in ECE

- Dr. Benninga, Tues. 7-9:50PM

LEE 233 Curriculum and Assessment in ECE

- Dr. Wu, Tues. 7-9:50PM

ERE 153 Educational Statistics

- Recommend taking it with Dr. Wiechmann, Mon. 7-9:50PM or Fri. 4:30-9:50PM